



Sycamore Lakes, Skegness Road Burgh Le Marsh, PE24 5LN

- Two Bedroom Holiday Lodge
 - Open-Plan Living Area
 - En-Suite with Double Vanity
 - Utility Room with Washer
- Built to BS 3632 Residential Specification
- Located on Sycamore Lakes Holiday Park
 - Super-King Storage Bed
 - Large Wrap Around Decking
 - Anti-Freeze Pipe System

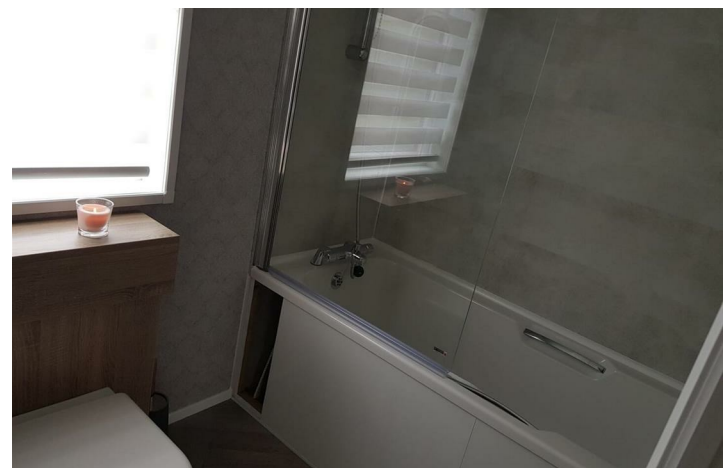
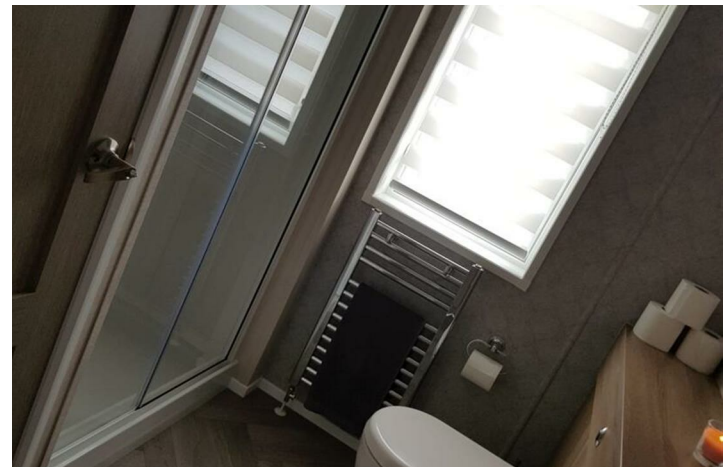
Contact Annette & Team Tempo **NOW**

07870773292
info@tempoleisure.co.uk
www.tempoleisure.co.uk

Fabulous holiday home located in the tranquil setting of Sycamore Lakes, Burgh Le Marsh offering a perfect blend of comfort and modern living. The Bespoke 2021 Victory Leisure Homes Cezanne Model Lodge, measuring an impressive 42"x20", has been thoughtfully designed, incorporating elements from both the 2020 and 2021 model designs to create a unique and inviting space.

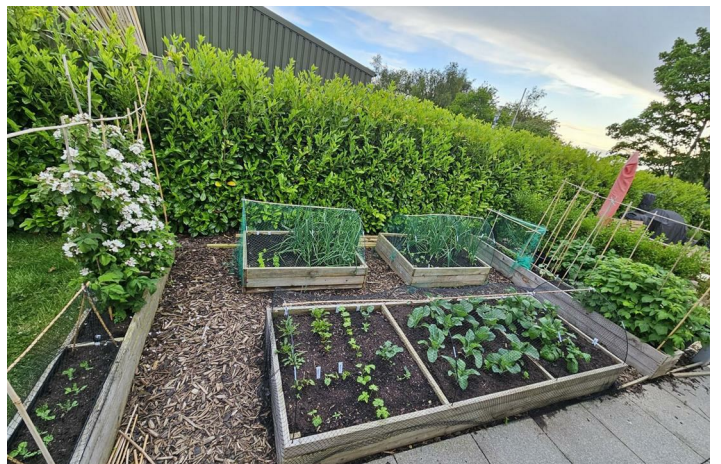
The exterior features a large decking area that wraps around to the main entrance, providing ample space for outdoor dining or simply enjoying the fresh air. Steps lead down to a generous garden and terrace area, ideal for gardening enthusiasts or those who appreciate outdoor living. The end plot offers an additional piece of land, which has been transformed into a private south-facing slabbed terrace, perfect for soaking up the sun. A 16-foot raised bed vegetable plot is also available, which can be removed if desired. Along with off-road parking for three cars.

This lodge is built to BS 3632 residential specifications, ensuring it is well-insulated and suitable for year-round living. An anti-pipe freezing system adds an extra layer of comfort during the colder months. For added convenience, the property includes two lockable metal sheds, one insulated, providing ample storage space. This holiday home provides a peaceful retreat while being conveniently located near the charming coastal town of Skegness.



Interior

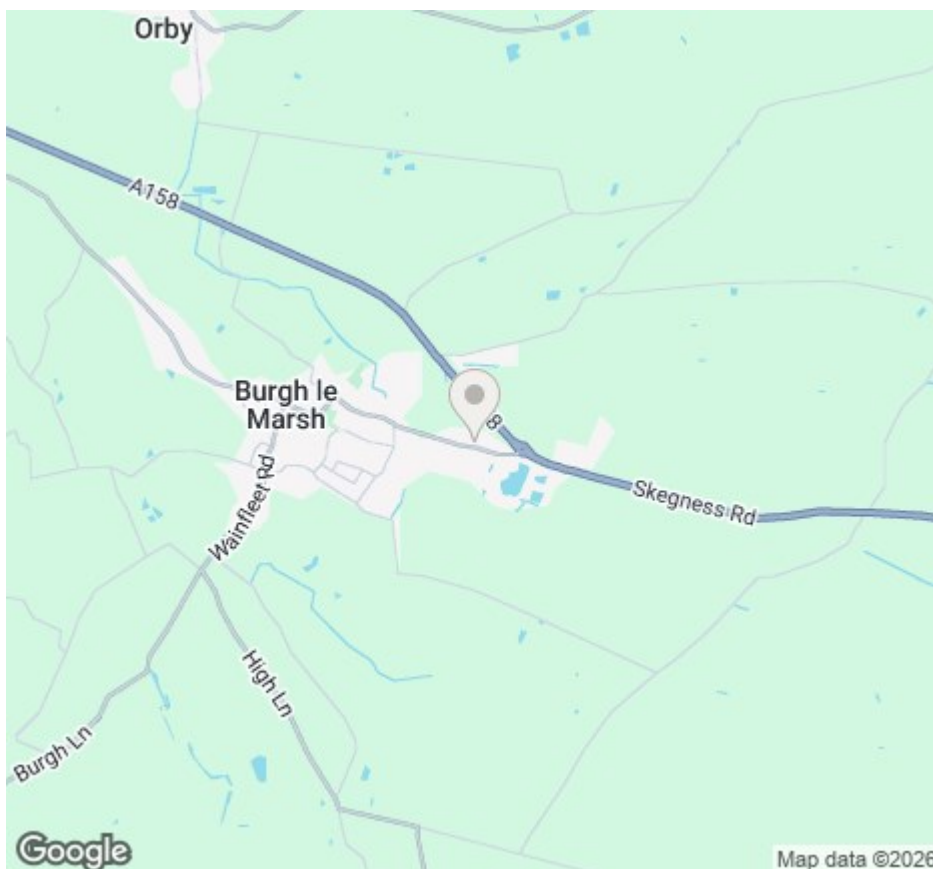
As you enter, you are greeted by a spacious reception room that flows seamlessly into an extended kitchen, designed for both functionality and style. The kitchen boasts an integrated dishwasher, a Smeg sink with a pull-out multi-spray mixer tap, and a five-ring gas cooker complemented by an electric fan oven. The low voltage dimmable lights throughout the lounge, dining room, and kitchen create a warm and inviting atmosphere, perfect for entertaining or relaxing. The lodge features two well-appointed bedrooms, each designed with comfort in mind. The super-king bedroom boasts a luxurious super-king Ottoman style storage bed, complemented by an additional wardrobe and an en-suite bathroom. This en-suite is a true highlight, featuring double vanity units and a bath with a overhead shower. The second bedroom is equally impressive, featuring a king-size Ottoman style storage bed and a cleverly designed Jack and Jill bathroom, ensuring convenience and privacy for family members.





Viewings

Viewings by arrangement only. Call 07870773292 to make an appointment.



Notice

Please note we have not tested any apparatus, fixtures, fitting or services. Interested parties must undertake their own investigation into the working order of these items. All measurements stated in this brochure are approximate and photographs provided are for guidance only. We are advised that the property is subject to site fees.

Terms & Conditions Misrepresentation Act 1967:-

tempoleisure.co.uk looks to ensure that all our sales particulars are accurate and reliable, we believe the above details to be correct but their accuracy cannot be guaranteed and they do not constitute any part of an offer or contract. Any intending purchasers or lessees must satisfy themselves by inspection or otherwise as to the correctness of each statement in these particulars before entering into any formal contract to purchase this property.

Arrange A Viewing

If you are interested in viewing this property please call 07870773292 or email info@tempoleisure.co.uk

Property Listing

If you are thinking of selling your property tempoleisure.co.uk will be more than happy to help, please call our team on 01772 633399 or email info@tempoleisure.co.uk

Contact Annette & Team Tempo **NOW**

07870773292
info@tempoleisure.co.uk
www.tempoleisure.co.uk